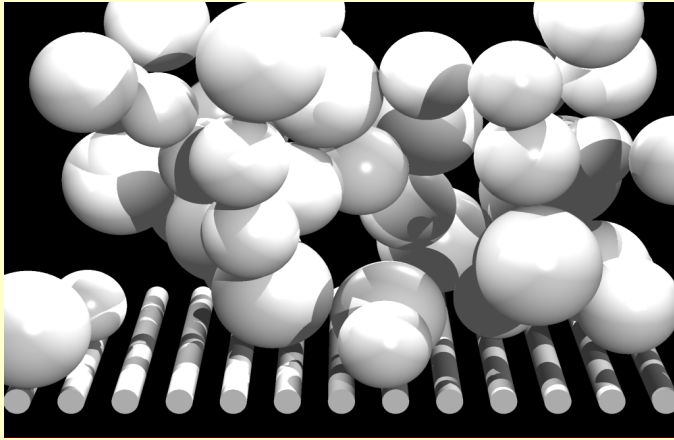
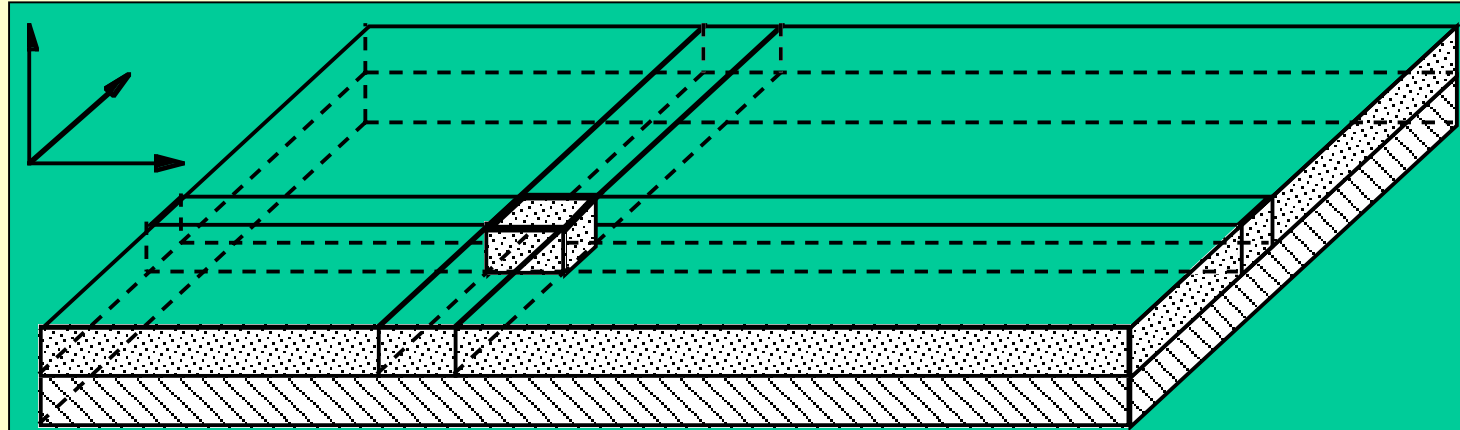


# Particle Layer Detachment from Solid Surfaces

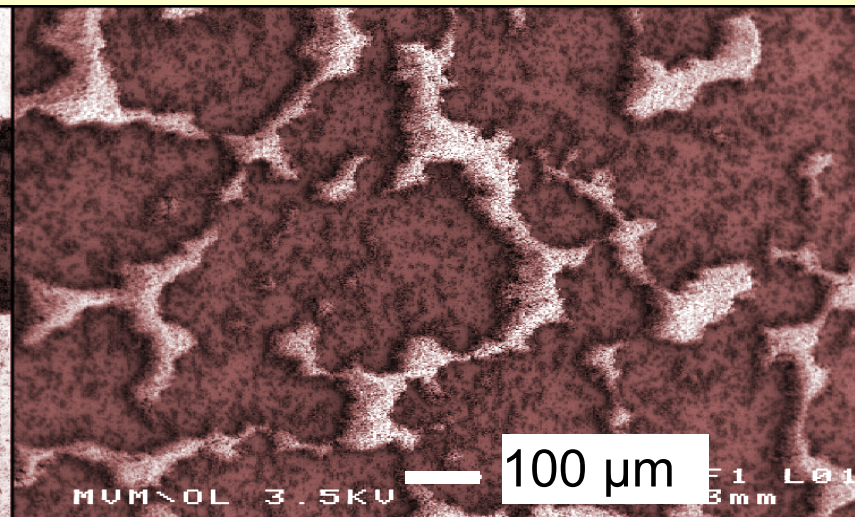
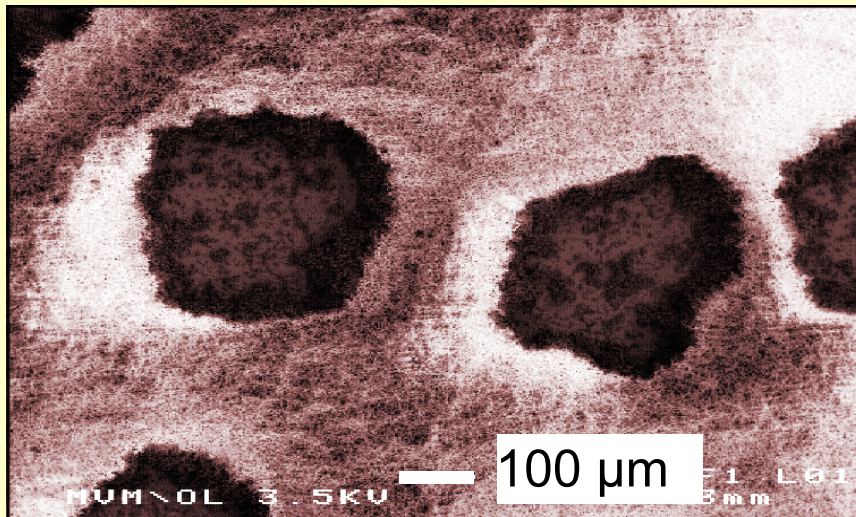


Particle layer generation  
by single particle tracking  
in flow and force fields



Modelling and simulation of particle layer detachment

- patchy cleaning
- strength distribution (local)
- dynamic cleaning
- stress distribution (local and time)



Residual particle  
layers (limestone,  
 $\times_{50,3} \approx 1.5 \mu\text{m}$ )  
at 2900 g (left)  
resp.  
5100 g (right)  
on polished disc  
(aluminium)